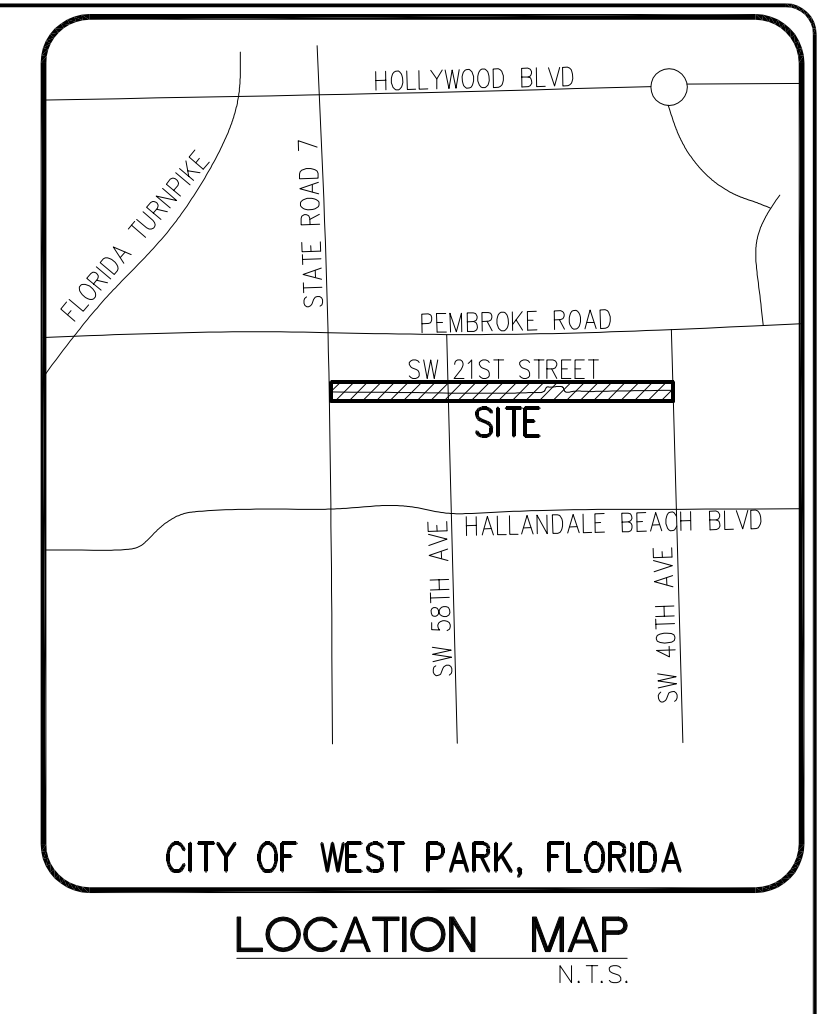
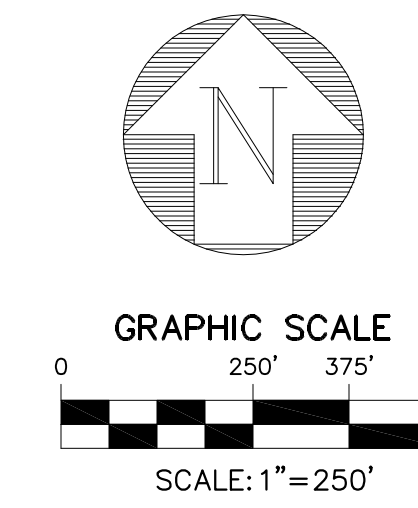
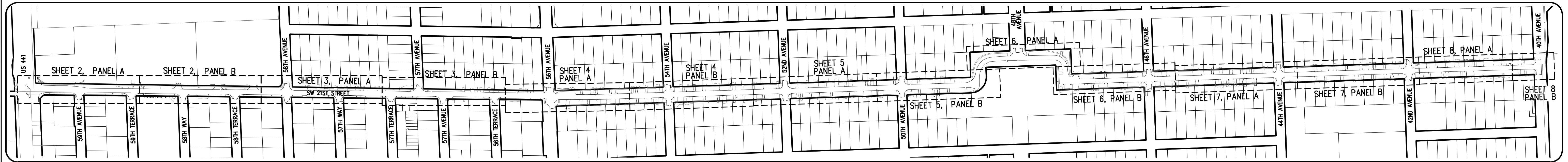


# TOPOGRAPHIC SURVEY OF SW 21ST STREET FROM US 441 TO SW 40TH AVENUE CITY OF WEST PARK FLORIDA



NO.	DATE	REVISIONS	REMARKS

©COPYRIGHT 2022 BY ENGENUITY GROUP, INC. THIS DRAWING IS PROVIDED FOR INFORMATIONAL PURPOSES ONLY. UNLESS SIGNED AND SEALED BY A REGISTERED PROFESSIONAL SURVEYOR AND MAPPING ENGINEER, THIS DRAWING IS VOID. ENGENUITY GROUP, INC.



KEY MAP

LEGEND	
	MEASURED ELEVATION
	CONCRETE
	PAVERS
	GRAVEL
	MAILBOX
	INFORMATION SIGN (SINGLE POST)
	ALUMINIUM FENCE
	CHAIN LINK FENCE
	WOODEN FENCE
	TEMPORARY BENCHMARK
	CATCH BASIN
	STORM MANHOLE
	GAS VALVE
	WATER METER
	FIRE HYDRANT
	WATER VALVE
	SANITARY VALVE
	SANITARY MANHOLE
	CLEANOUT
	WIRE PULL BOX - ELECTRIC
	WIRE PULL BOX - FIBER OPTIC
	GUY WIRE
	ELECTRIC PANEL
	STREET LIGHT
	WOOD UTILITY POLE
	WOOD UTILITY POLE WITH LIGHT
	CONCRETE UTILITY POLE
	CONCRETE UTILITY POLE WITH LIGHT
	BACKFLOW PREVENTOR
	FLOOD LIGHT
	OVERHEAD ELECTRIC
	OVERHEAD ELECTRIC
	UNDERGROUND SANITARY
	UNDERGROUND STORM
	AT&T MANHOLE

### ABBREVIATIONS

ORB	OFFICIAL RECORD BOOK
PB	PLAT BOOK
PG(S)	PAGE(S)
℄	CENTERLINE
DIP	DUCTILE IRON PIPE
PVC/HDPE	PLASTIC PIPE
RCP	REINFORCED CONCRETE PIPE
ADA	AMERICANS WITH DISABILITIES ACT
LB	LICENSED BUSINESS
TYP	TYPICAL
R/W	RIGHT-OF-WAY
FDOT	FLORIDA DEPARTMENT OF TRANSPORTATION

### TREE LEGEND

	6"	FICUS TREE AND SIZE
	6"	JUMBO LIMBO TREE AND SIZE
	6"	ROYAL PALM AND SIZE
	6"	ORNAMENTAL TREE AND SIZE
	6"	CABBAGE PALM AND SIZE
	6"	MANGO TREE AND SIZE
	6"	COCONUT PALM TREE AND SIZE
	6"	FISHTAIL PALM AND SIZE
	6"	PYMY DATE AND SIZE
	6"	ALEXANDER PALM AND SIZE
	6"	FOXTAIL PALM AND SIZE
	6"	PALM TREE AND SIZE
	6"	PINE TREE AND SIZE
	6"	SEAGRAPE AND SIZE
	6"	OAK TREE AND SIZE
	6"	CHRISTMAS PALM TREE AND SIZE
	6"	UNKNOWN PALM TREE AND SIZE
	6"	DATE PALM TREE AND SIZE

### SURVEYOR'S NOTES

1. THE SURVEY DEPICTED HEREON IS CLASSIFIED AS A TOPOGRAPHIC AND TREE SURVEY AND IS IN COMPLIANCE WITH CHAPTER 5J-17 FLORIDA ADMINISTRATIVE CODE.
2. ENGENUITY GROUP, INC. AND THE CERTIFYING SURVEYOR ACCEPT NO RESPONSIBILITY FOR RIGHT-OF-WAYS, EASEMENTS RESTRICTIONS OR OTHER MATTERS AFFECTING TITLE TO THE LANDS SURVEYED OTHER THAN THOSE RECITED IN THE CURRENT DEED AND/OR OTHER INSTRUMENT OF RECORD FURNISHED BY THE CLIENT.
3. UNDER GROUND UTILITIES WERE NOT SEARCHED FOR OR LOCATED BY ENGENUITY GROUP, INC.
4. THIS SURVEY IS NOT VALID WITHOUT THE ORIGINAL SIGNATURE AND RAISED SEAL OF A FLORIDA LICENSED SURVEYOR AND MAPPING ENGINEER. OTHERWISE THIS MAP IS FOR INFORMATIONAL PURPOSES ONLY.
5. LAST DATE OF FIELD SURVEY: APRIL 22, 2022
6. ALL DISTANCES SHOWN HEREON ARE IN U.S. FEET AND DECIMAL PARTS THEREOF UNLESS OTHERWISE NOTED.
7. ADDITIONS OR DELETIONS TO THIS SURVEY MAP BY OTHER THAN THE SIGNING PARTY OR PARTIES IS PROHIBITED WITHOUT WRITTEN CONSENT OF THE SIGNING PARTY OR PARTIES.
8. ACCURACY STATEMENT: A FIELD SURVEY WAS PERFORMED IN ACCORDANCE WITH CHAPTER 5J-17, FLORIDA ADMINISTRATIVE CODE PURSUANT TO SECTION 472.027 FLORIDA STATE STATUTES FOR TOPOGRAPHIC SURVEYS. THE ACCURACY OF CONTROL DATA WAS VERIFIED BY REDUNDANT MEASUREMENTS OF TRAVERSE CLOSURES AND EXCEEDS COMMERCIAL/HIGH RISK: LINEAR: 1 FOOT IN 10,000 FEET.
9. THIS MAP IS INTENDED TO BE DISPLAYED AT A SCALE OF 1:240 OR SMALLER.
10. THIS SURVEY WAS PREPARED WITHOUT THE BENEFIT OF A TITLE REPORT.
11. ALL DIMENSIONS SHOWN HEREON ARE MEASURED UNLESS OTHERWISE NOTED.
12. ELEVATIONS SHOWN HEREON ARE BASED ON THE NORTH AMERICAN VERTICAL DATUM OF 1988 (NAVD 1988) AND REFERENCE THE FOLLOWING BENCHMARK: BROWARD COUNTY BM 1170 ELEVATION=8.46' (NGVD 1929) ELEVATION=6.86'(NAVD 1988)
13. THE FOLLOWING CONVERSION MAY BE USED TO CONVERT FROM THE NATIONAL GEODETIC VERTICAL DATUM OF 1929 (NGVD 29) TO THE NORTH AMERICAN VERTICAL DATUM OF 1988 (NAVD 88) (PER U.S. ARMY CORPS OF ENGINEERS CORPSCON VERSION 6.0.1).  
NGVD 29 - 1.585 = NAVD 88.
14. THIS SURVEY IS BASED ON THE FLORIDA STATE PLANE COORDINATE SYSTEM TRANSVERSE MERCATOR, FLORIDA EAST ZONE 901, NORTH AMERICAN DATUM OF 1983 (1990 ADJUSTMENT).
15. THE RIGHT-OF-WAY FOR SE 21ST STREET FROM US 441 (STATE ROAD 7) TO MARTIN LUTHER KING BLVD (SW 56TH AVENUE) IS NOT PARALLEL. THE SOUTH 25 FEET IS SHOWN IN PLAT BOOK 6, PAGE 25 AND FOLLOWS THE NORTH LINE OF THE SOUTH 1/2 OF THE SOUTHEAST 1/4 OF SECTION 24, TOWNSHIP 51 SOUTH, RANGE 41 EAST WHEREAS THE PLAT ON THE NORTH SIDE DOES NOT FOLLOW THIS LINE, AND CONVERGES AS YOU HEAD EASTERLY FROM US 441 (STATE ROAD 7). ALL RECORDS ARE BROWARD COUNTY RECORDS. THE RIGHT-OF-WAY LINES HAVE BEEN FIELD VERIFIED WITH SUFFICIENT CONTROL.

JENNIFER MALIN, P.S.M.  
PROFESSIONAL SURVEYOR AND MAPPING ENGINEER  
STATE OF FLORIDA LICENSE NO. 6667  
STATE OF FLORIDA LB#6603

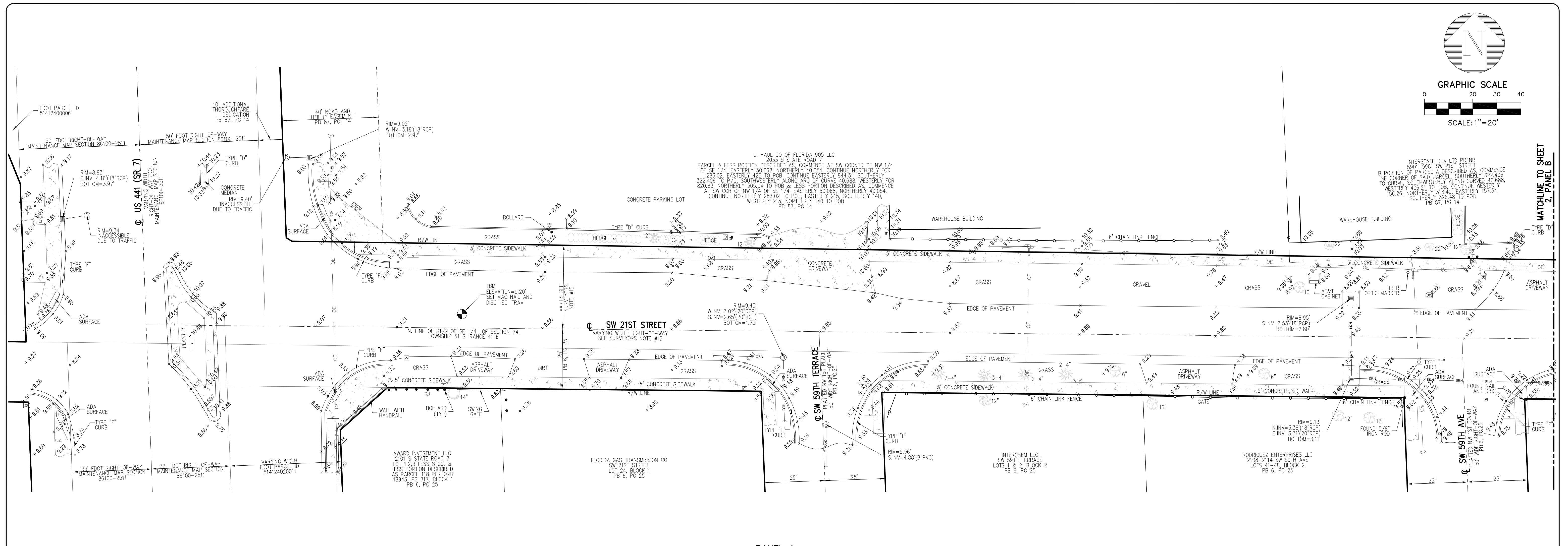
TOPOGRAPHIC SURVEY FOR:  
SW 21ST STREET  
US 441 TO SW 40TH AVENUE  
CITY OF WEST PARK, FLORIDA



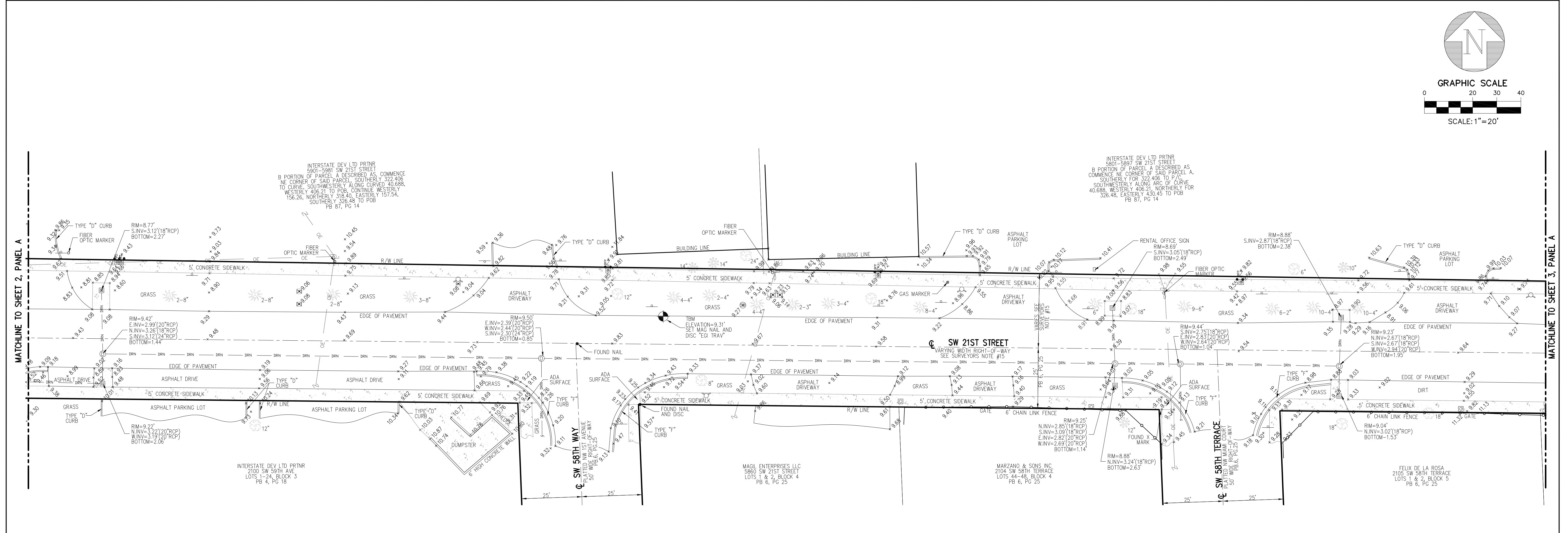
DATE	SCALE	CAD FILE	DATE	SCALE	CAD FILE
04-22-2022	1	21174.01	04-22-2022	1	21174.01

1

JOB NO.  
21174.01



PANEL A



PANEL B

NO.	DATE	REVISIONS	BY

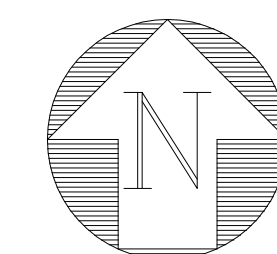
©COPYRIGHT 2022 BY ENGENUITY GROUP, INC. THIS DRAWING IS PROVIDED FOR YOUR INFORMATION ONLY. UNLESS SIGNED AND SEALED BY A REGISTERED PROFESSIONAL SURVEYOR AND ENGINEER, IT IS VOID. ENGENUITY GROUP, INC.

TOPOGRAPHIC SURVEY FOR:  
**SW 21ST STREET**  
**US 441 TO SW 40TH AVENUE**  
**CITY OF WEST PARK, FLORIDA**

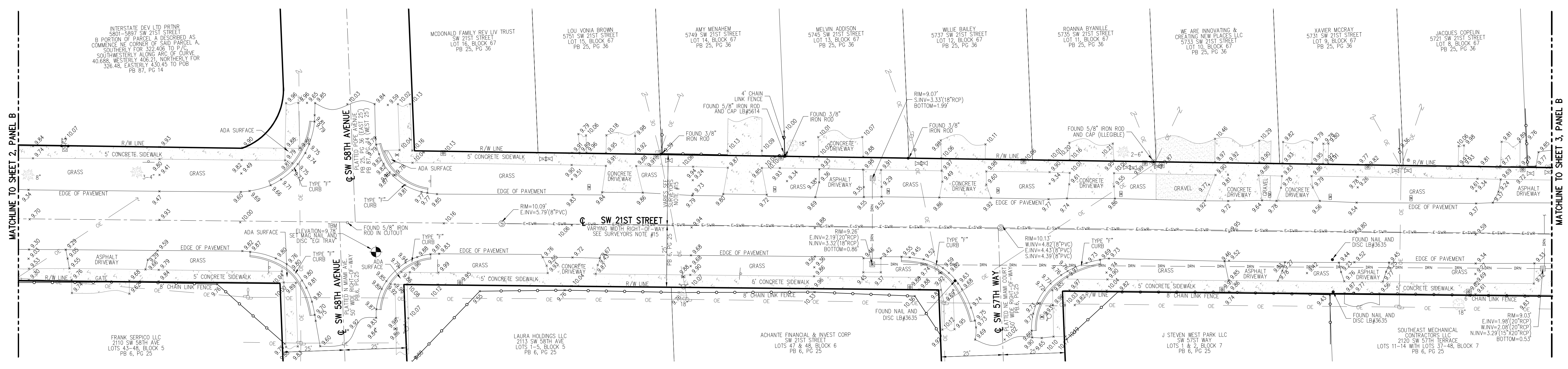
A Higher Standard of Excellence  
**engenuity group inc.**  
 ENGINEERS • SURVEYORS • LAND MANAGERS  
 1280 N. CONGRESS AVENUE, SUITE 101,  
 WEST PALM BEACH, FLORIDA 33409  
 PH: (561) 655-1151 • FAX: (561) 932-9390  
 WWW.ENGENUITYGROUP.COM

DATE	SCALE	CAD FILE	SIX PROJECT	DRAWN	CAR	CHECKED	JCM
04-22-2022	1"=20'	21174.01	21174.01	21174.01			

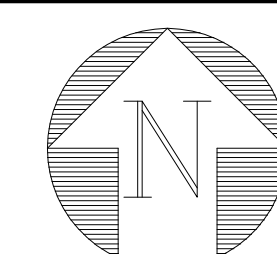
JOB NO.  
**21174.01**



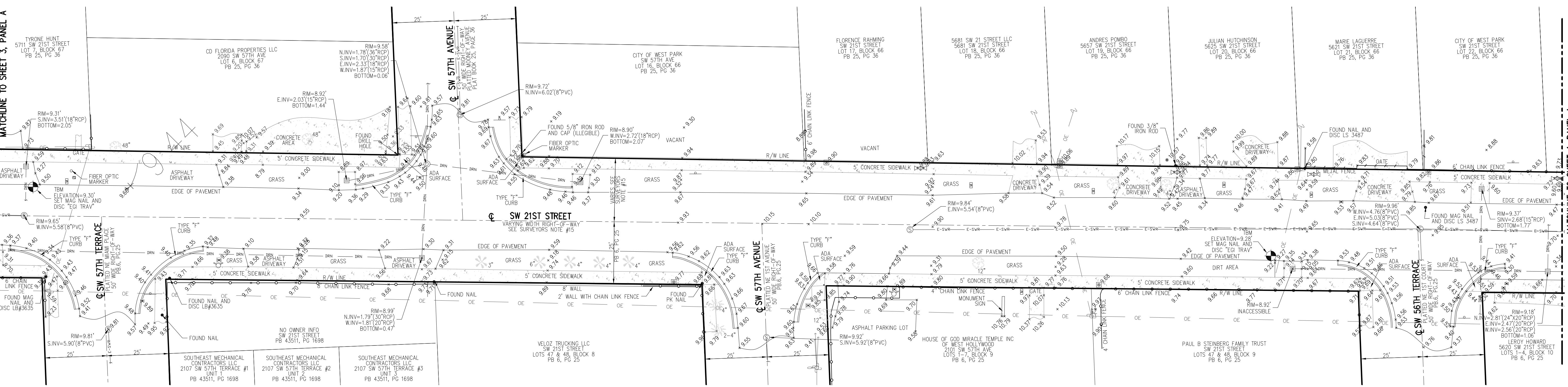
GRAPHIC SCALE  
0 20 40  
SCALE: 1"=20'



PANEL A



GRAPHIC SCALE  
0 20 30 40  
SCALE: 1"=20'



PANEL B

NO.	DATE	REMARKS

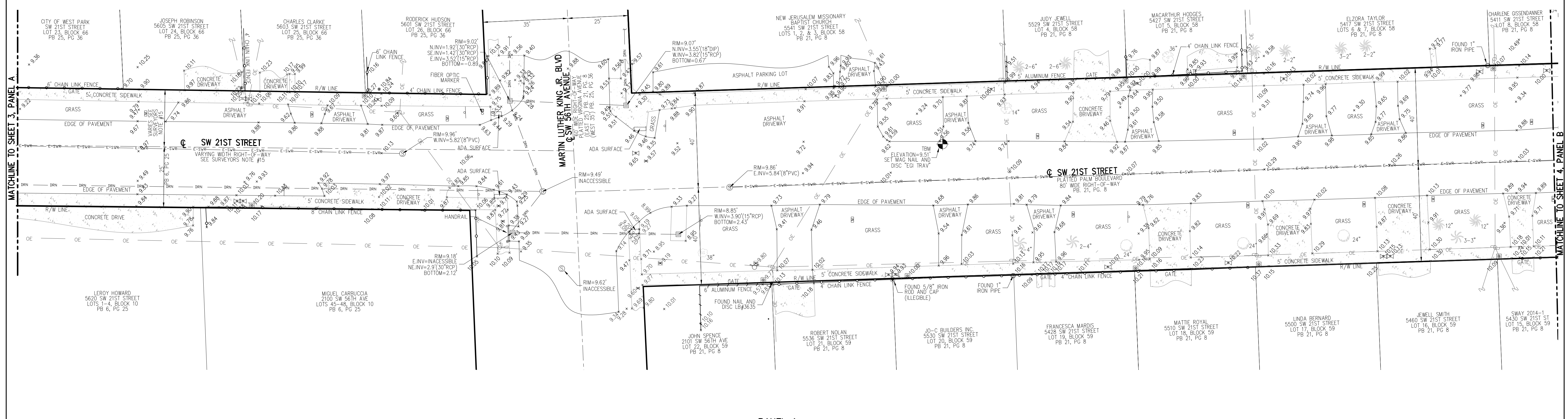
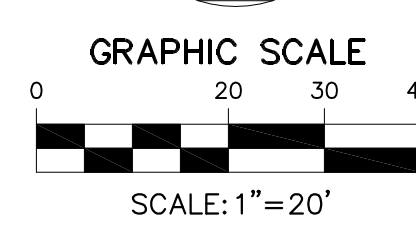
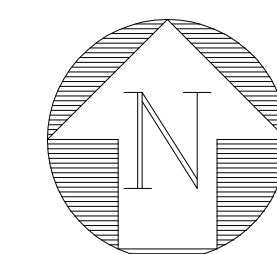
©COPYRIGHT 2022 BY ENGENUITY GROUP, INC. THIS DRAWING IS PROVIDED FOR YOUR INFORMATION ONLY. UNLESS SIGNED AND SEALED BY A REGISTERED PROFESSIONAL SURVEYOR AND ENGINEER, IT IS VOID. ENGENUITY GROUP, INC.

SW 21ST STREET  
US 441 TO SW 40TH AVENUE  
CITY OF WEST PARK, FLORIDA

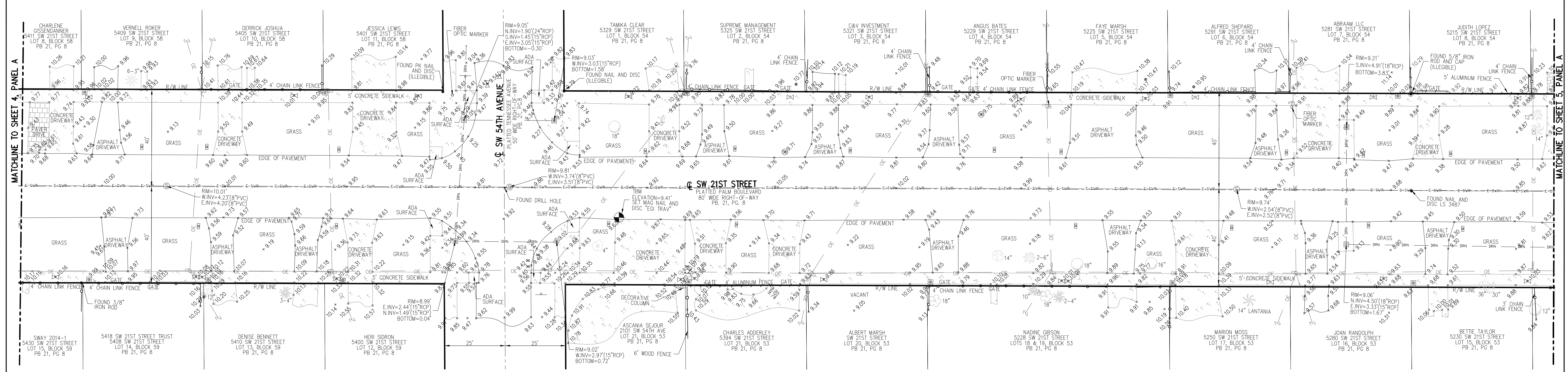
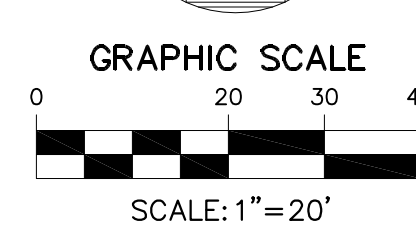
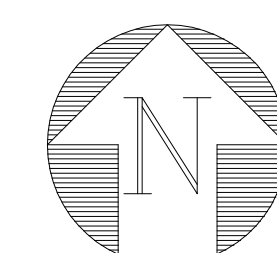
TOPOGRAPHIC SURVEY FOR:

A Higher Standard of Excellence  
**engenuity** group, inc.  
1280 N. CONGRESS AVENUE, SUITE 101,  
WEST PALM BEACH, FLORIDA 33409  
PH: (561) 655-1151 • FAX: (561) 932-9390  
WWW.ENGENUITYGROUP.COM

DATE	04-22-2022
SCALE	1"=20'
CAD FILE	21174.01
SIX PROJECT	21174.01
DRAWN	CAR
CHECKED	JCM
JOB NO.	21174.01



PANEL A



PANEL B

NO.	DATE	REVISIONS	BY

© COPYRIGHT 2022 BY THIS ENGINEERING GROUP, INC. THIS DRAWING IS PROVIDED FOR YOUR INFORMATION ONLY. UNLESS SIGNED AND SEALED BY A REGISTERED PROFESSIONAL SURVEYOR AND ENGINEER, IT IS VOID. ENGINEERING GROUP, INC.

TOPOGRAPHIC SURVEY FOR:  
**SW 21ST STREET**  
**US 441 TO SW 40TH AVENUE**  
**CITY OF WEST PARK, FLORIDA**

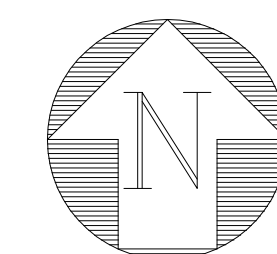
A Higher Standard of Excellence  
**engenuity group, inc.**  
 ENGINEERS • SURVEYORS • LAND SURVEYORS  
 1280 N. CONGRESS AVENUE, SUITE 101  
 WEST PALM BEACH, FLORIDA 33409  
 PH: (561) 655-1151 • FAX: (561) 932-9390  
 WWW.ENGUENITYGROUP.COM

DATE	SCALE	CAD FILE	DATE	SCALE	CAD FILE
04-22-2022	1"=20'	21174.01	04-22-2022	1"=20'	21174.01

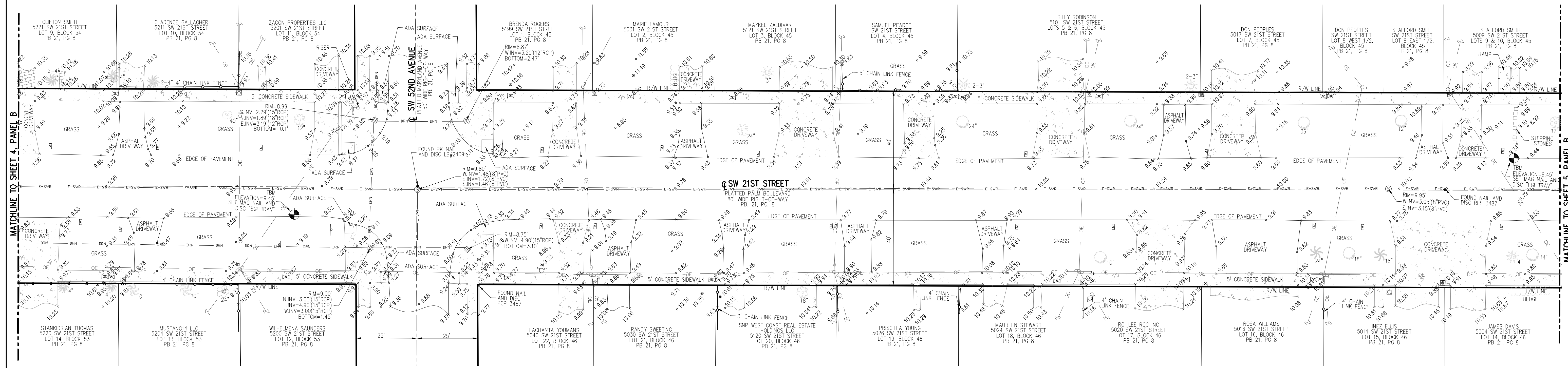
4  
8

JCM

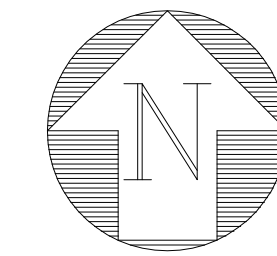
21174.01



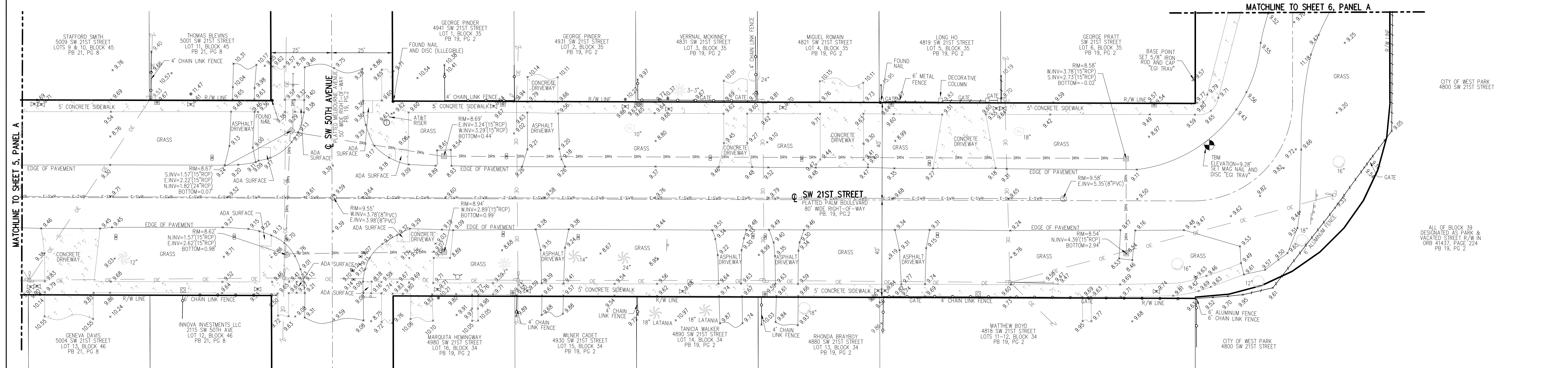
GRAPHIC SCALE  
0 20 30 40  
SCALE: 1"=20'



PANEL A



GRAPHIC SCALE  
0 20 30 40  
SCALE: 1"=20'



PANEL B

NO.	DATE	REVISIONS	BY

©COPYRIGHT 2022 BY THIS ENGINEERING GROUP, INC. THIS DRAWING IS PROVIDED FOR YOUR INFORMATION ONLY. UNLESS SIGNED AND SEALED BY A REGISTERED PROFESSIONAL SURVEYOR AND ENGINEERING GROUP, INC.

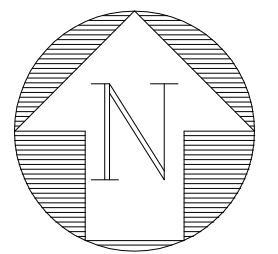
TOPOGRAPHIC SURVEY FOR:  
**SW 21ST STREET  
US 441 TO SW 40TH AVENUE  
CITY OF WEST PARK, FLORIDA**

A Higher Standard of Excellence  
**engenuity inc.**  
ENGINEERS • SURVEYORS • LAND SURVEYORS • GROUP, INC.  
1280 N. CONGRESS AVENUE, SUITE 101,  
WEST PALM BEACH, FLORIDA 33409  
PH: (561) 655-1151 • FAX: (561) 952-9390  
WWW.ENGUINITYGROUP.COM

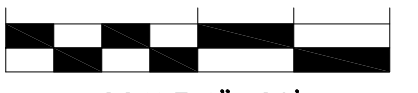
DATE	SCALE	CAD FILE	SIX PROJECT	DRAWN	CHECKED	JOB NO.
04-22-2022	1"=20'	21174.01	21174.01	JCM	JCM	21174.01

5	8
---	---

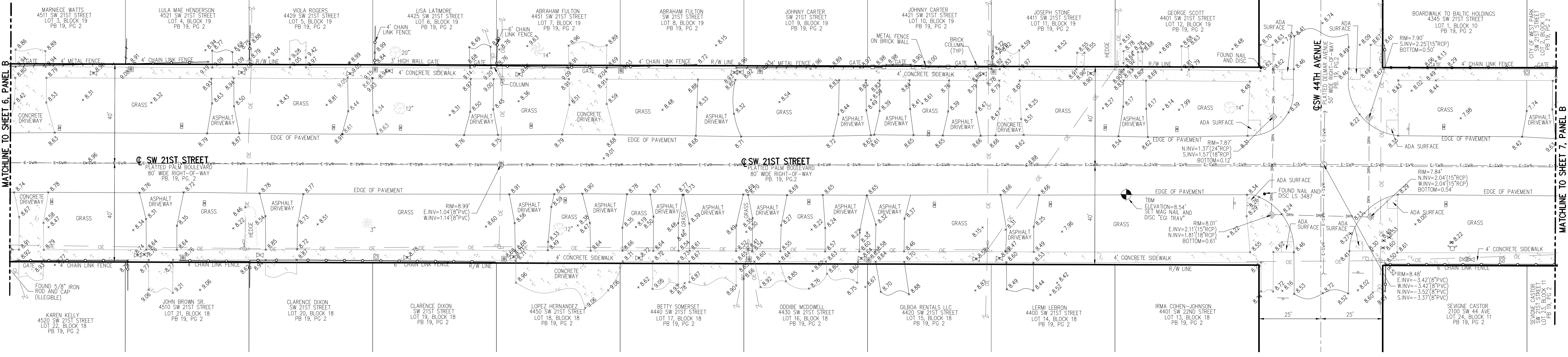




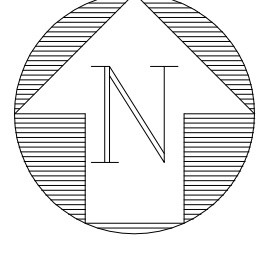
GRAPHIC SCALE



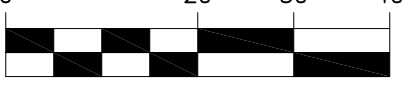
SCALE: 1"=20'



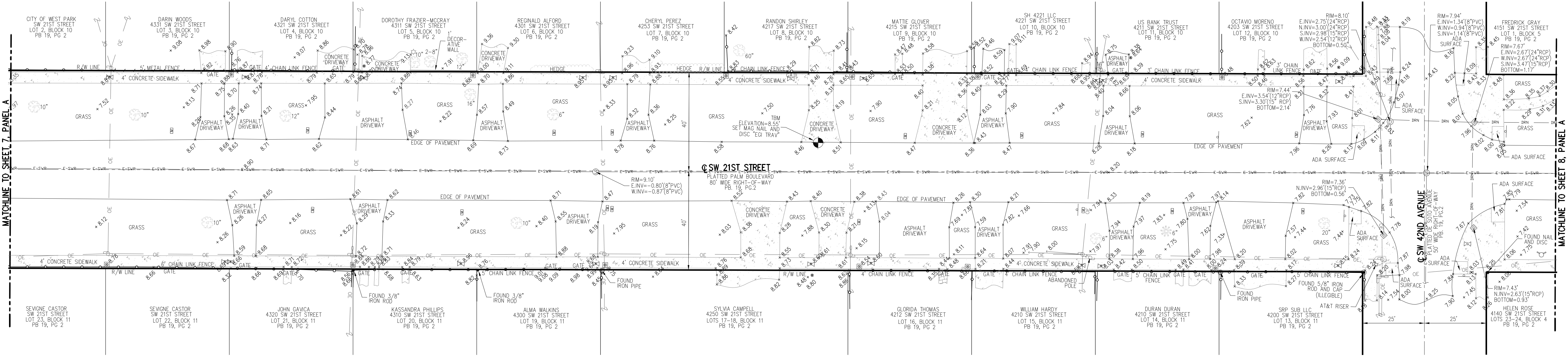
PANEL A



GRAPHIC SCALE



SCALE: 1"=20'



PANEL B

NO.	DATE	REVISIONS	REMARKS

©COPYRIGHT 2022 BY ENGENUITY GROUP, INC. THIS DRAWING IS PROVIDED FOR YOUR INFORMATION ONLY. UNLESS SIGNED AND SEALED BY A REGISTERED PROFESSIONAL SURVEYOR AND ENGINEER, THIS DRAWING IS VOID. ENGENUITY GROUP, INC.

SW 21ST STREET  
US 441 TO SW 40TH AVENUE  
CITY OF WEST PARK, FLORIDA

TOPOGRAPHIC SURVEY FOR:



DATE	04-22-2022	SCALE	1"=20'
CAD FILE	21174.01	DRAWN	CAR
CHECKED	JCM	JOB NO.	21174.01

