

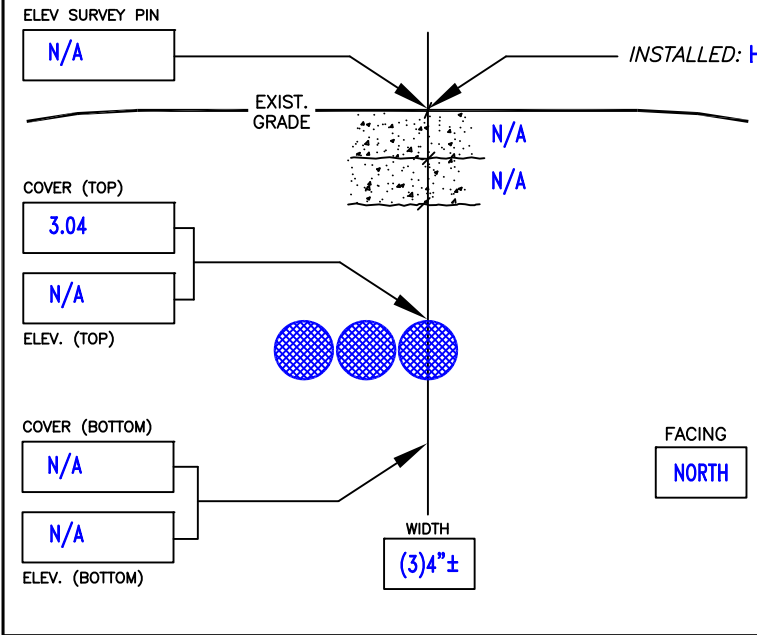


TEST HOLE INVENTORY  
PROJECT: SW 48TH AVENUE COMPLETE ST - THS  
PROJECT NO.: PF22075  
PROJECT MANAGER: ANDRES GARCIA  
CLIENT: CRAVEN THOMPSON & ASSOCIATES  
DATE: 1/17/23

TH#	REQUESTED UTILITY	UTILITY FOUND	REMARKS
1	FIBER OPTIC	(3)4" PVC(BLACK) FIBER OPTIC	SEE NOTE
2	FIBER OPTIC	(3)4" PVC(BLACK) FIBER OPTIC	SEE NOTE
3	WATER	12" DUCTILE IRON WATER	
3A	FIBER OPTIC	FIBER OPTIC	SEE NOTE
4	UNKNOWN	UNKNOWN	SEE NOTE
5	8" WATER	6" CAST IRON WATER	
6	WATER	WATER	SEE NOTE

PROJECT NAME:	SW 48TH AVENUE COMPLETE ST - THS
LOCATE REQUESTED BY:	CRAVEN THOMPSON & ASSOCIATES
UTILITY REQUESTED:	FIBER OPTIC
UTILITY FOUND:	FIBER OPTIC
MATERIAL AS FOUND:	PVC(BLACK)
SIZE AS FOUND:	(3)4"

CLIENT JOB#	N/A	WORK ORDER #	N/A		
PROJECT LOCATION:	WEST PARK, FL				
SHEET #:	C-19 OF N/A	PROPOSED:	UTILITY WORK		
FORM BY:	MP	ASSISTED BY:	DC	# OF HOLES:	1
PAVING CONDITION:	N/A	DATE DUG:	1-5-23		
SOIL CONDITIONS:	HARD DRY SAND ROCKY				
UTILITY CONDITION:	FAIR				

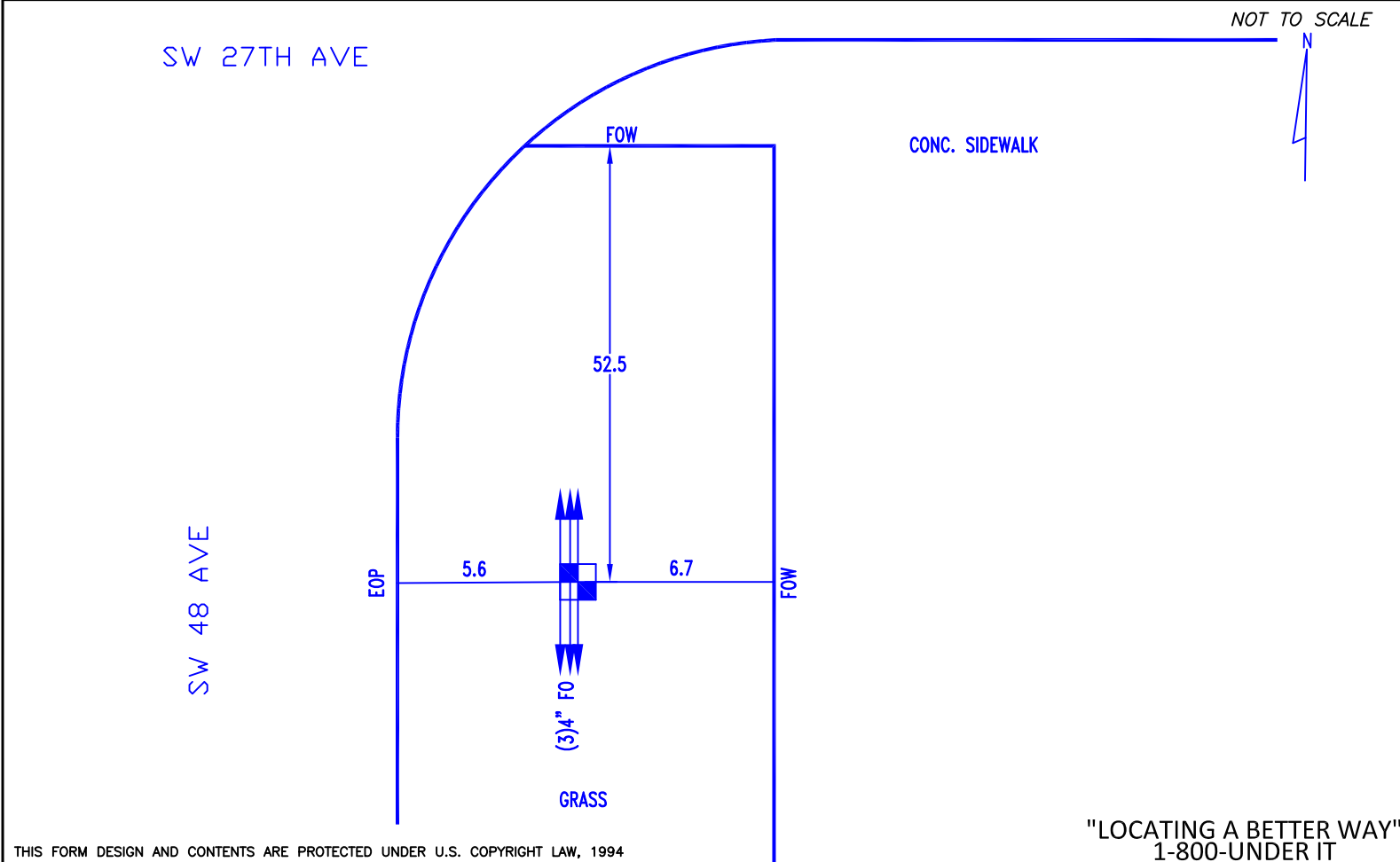


SURVEY PIN LOCATED BY: OTHERS

SURVEY INFO.: ALL MEASUREMENTS ON THIS FORM ARE IN ENGLISH / METRIC UNITS (FEET / METERS).

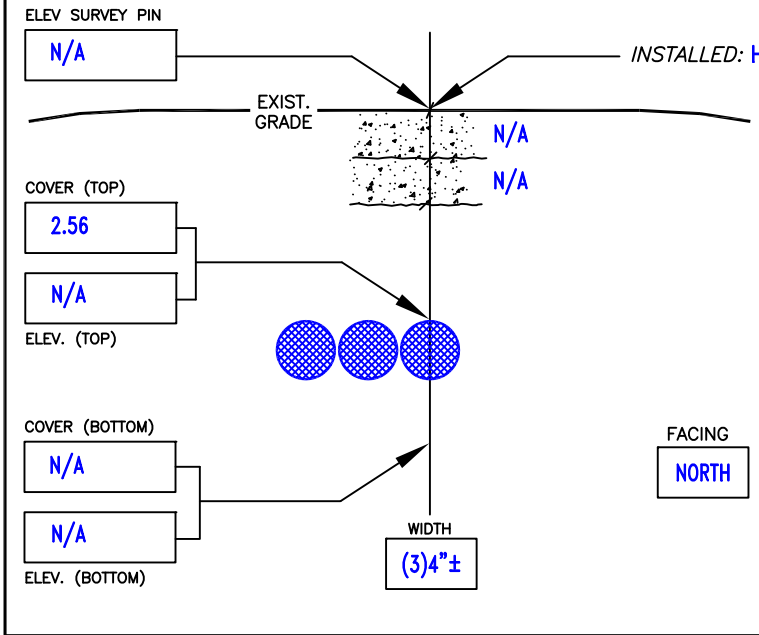
NO SURVEY REQUIRED.

NOTES: TEST HOLE REVEALED (3)4" PVC(BLACK) CONDUITS. HUB AND TACK SET ON EASTERN MOST UTILITY. OFFSET 1.54' FROM HUB.



PROJECT NAME:	SW 48TH AVENUE COMPLETE ST - THS
LOCATE REQUESTED BY:	CRAVEN THOMPSON & ASSOCIATES
UTILITY REQUESTED:	FIBER OPTIC
UTILITY FOUND:	FIBER OPTIC
MATERIAL AS FOUND:	PVC(BLACK)
SIZE AS FOUND:	(3)4"

CLIENT JOB#	N/A	WORK ORDER #	N/A		
PROJECT LOCATION:	WEST PARK, FL				
SHEET #:	C-19 OF N/A	PROPOSED:	UTILITY WORK		
FORM BY:	MP	ASSISTED BY:	DC	# OF HOLES:	1
PAVING CONDITION:	N/A	DATE DUG:	1-5-23		
SOIL CONDITIONS:	HARD DRY SAND ROCKY				
UTILITY CONDITION:	GOOD				

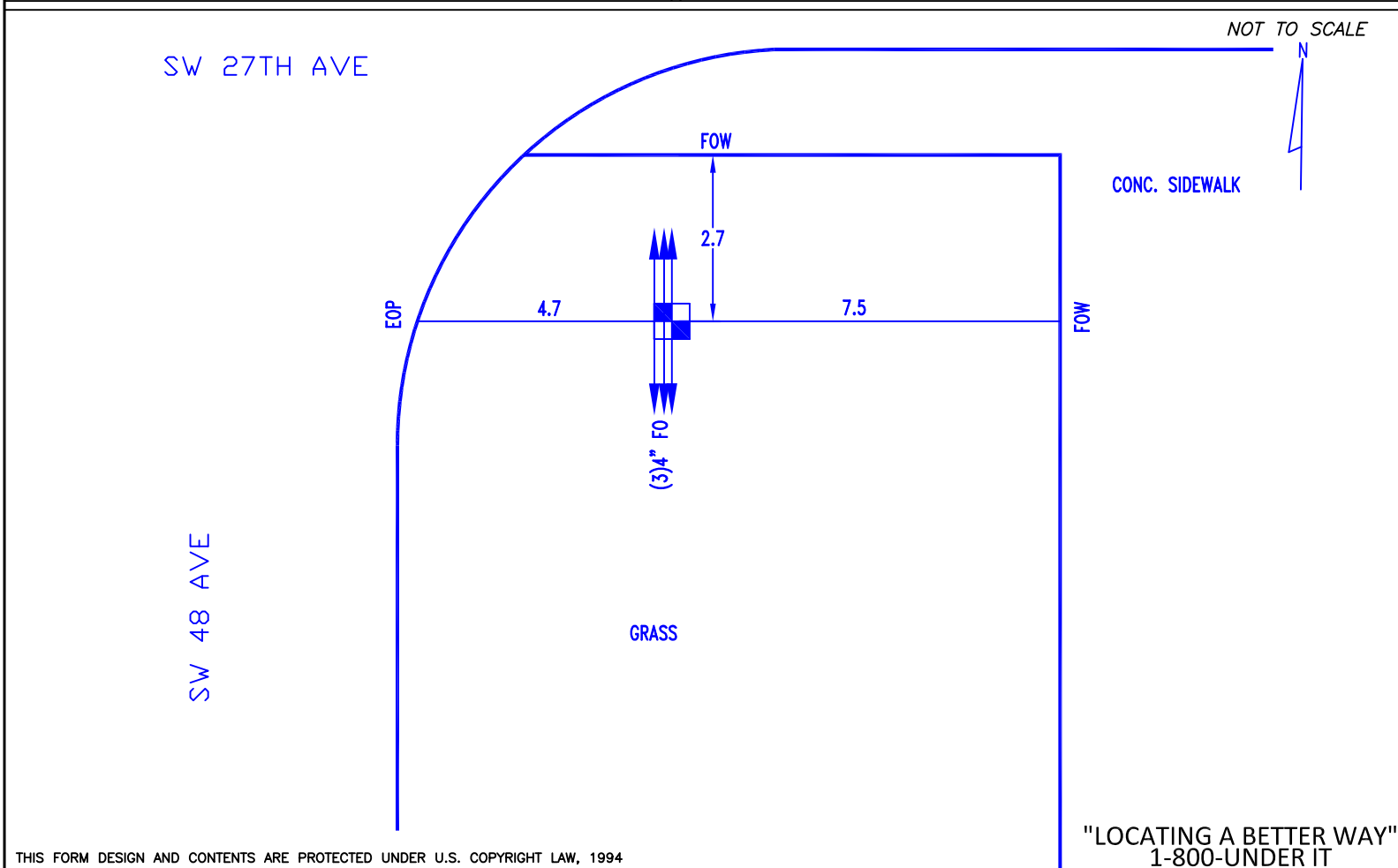


SURVEY PIN LOCATED BY: OTHERS

SURVEY INFO.: ALL MEASUREMENTS ON THIS FORM ARE IN ENGLISH / METRIC UNITS (FEET / METERS).

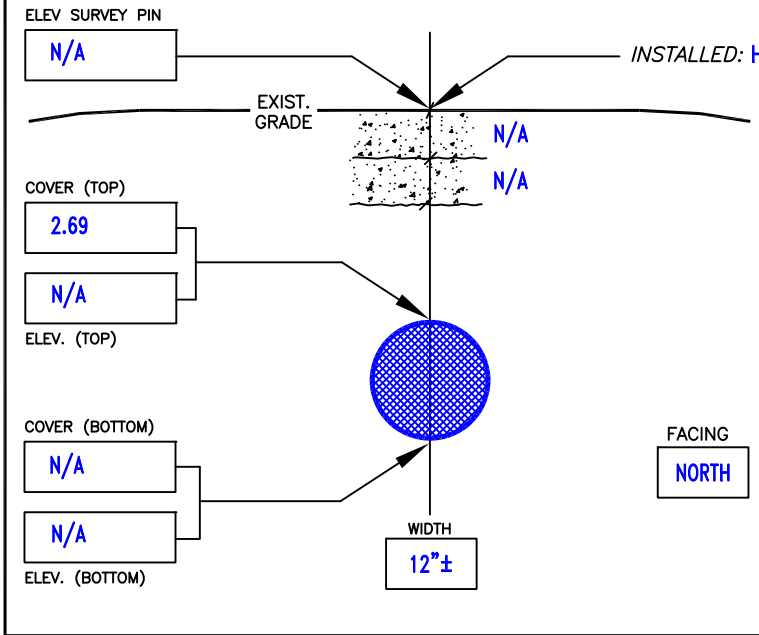
NO SURVEY REQUIRED.

NOTES: TEST HOLE REVEALED (3)4" PVC(BLACK) CONDUITS. HUB AND TACK SET ON EASTERN MOST UTILITY. OFFSET 1.54' FROM HUB.



PROJECT NAME:	SW 48TH AVENUE COMPLETE ST - THS
LOCATE REQUESTED BY:	CRAVEN THOMPSON & ASSOCIATES
UTILITY REQUESTED:	WATER
UTILITY FOUND:	WATER
MATERIAL AS FOUND:	DUCTILE IRON
SIZE AS FOUND:	12"

CLIENT JOB#	N/A	WORK ORDER #	N/A		
PROJECT LOCATION:	WEST PARK, FL				
SHEET #:	C-21 OF N/A	PROPOSED:	UTILITY WORK		
FORM BY:	MP	ASSISTED BY:	DC	# OF HOLES:	1
PAVING CONDITION:	N/A	DATE DUG:	1-5-23		
SOIL CONDITIONS:	HARD DRY SAND ROCKY				
UTILITY CONDITION:	GOOD				

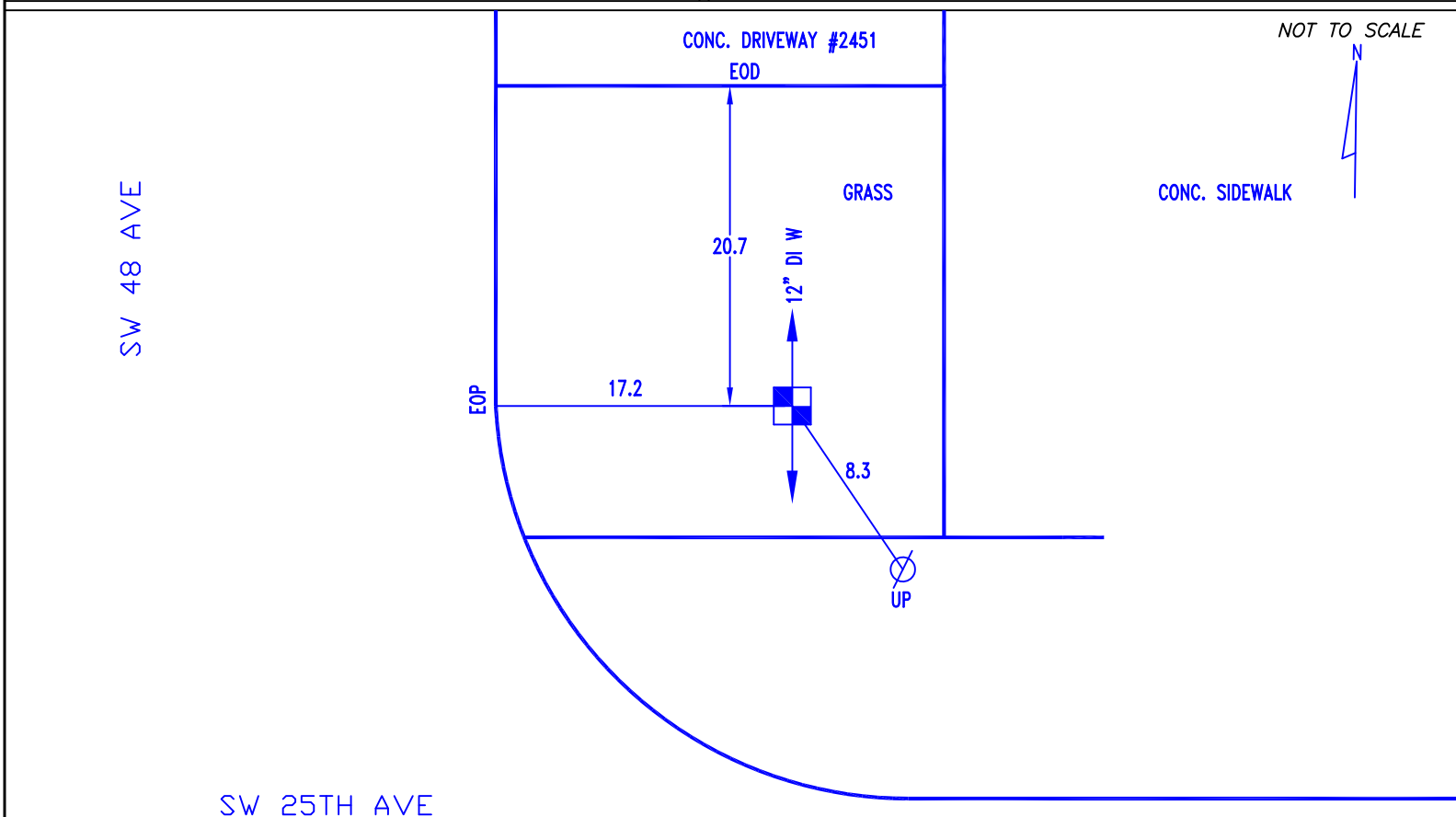


SURVEY PIN LOCATED BY: OTHERS

SURVEY INFO.: ALL MEASUREMENTS ON THIS FORM ARE IN ENGLISH / METRIC UNITS (FEET / METERS).

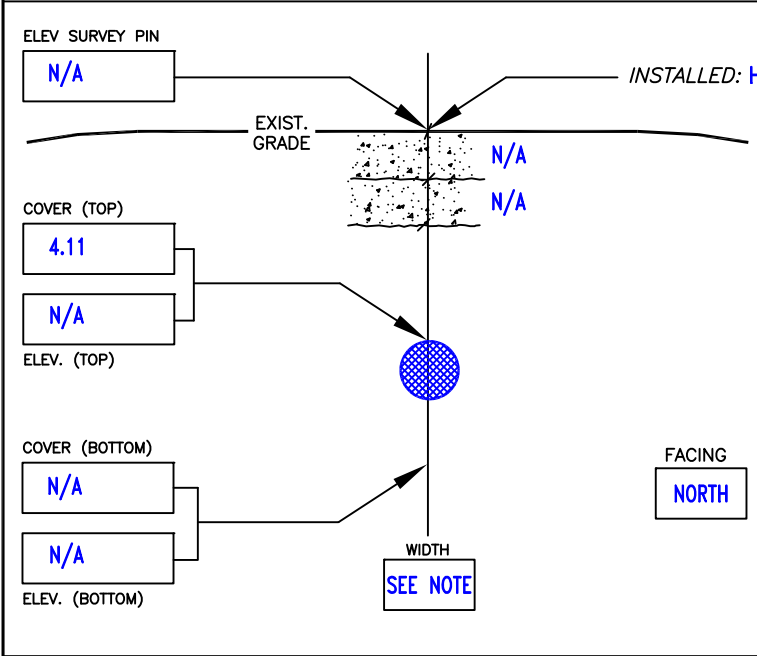
NO SURVEY REQUIRED.

NOTES:



PROJECT NAME:	SW 48TH AVENUE COMPLETE ST - THS
LOCATE REQUESTED BY:	CRAVEN THOMPSON & ASSOCIATES
UTILITY REQUESTED:	FIBER OPTIC
UTILITY FOUND:	FIBER OPTIC
MATERIAL AS FOUND:	SEE NOTE
SIZE AS FOUND:	SEE NOTE

CLIENT JOB#	N/A	WORK ORDER #	N/A		
PROJECT LOCATION: WEST PARK, FL					
SHEET #:	C-21 OF N/A	PROPOSED:	UTILITY WORK		
FORM BY:	MP	ASSISTED BY:	DC	# OF HOLES:	1
PAVING CONDITION:	N/A	DATE DUG:	1-10-23		
SOIL CONDITIONS: HARD DRY SAND ROCKY					
UTILITY CONDITION: SEE NOTE					



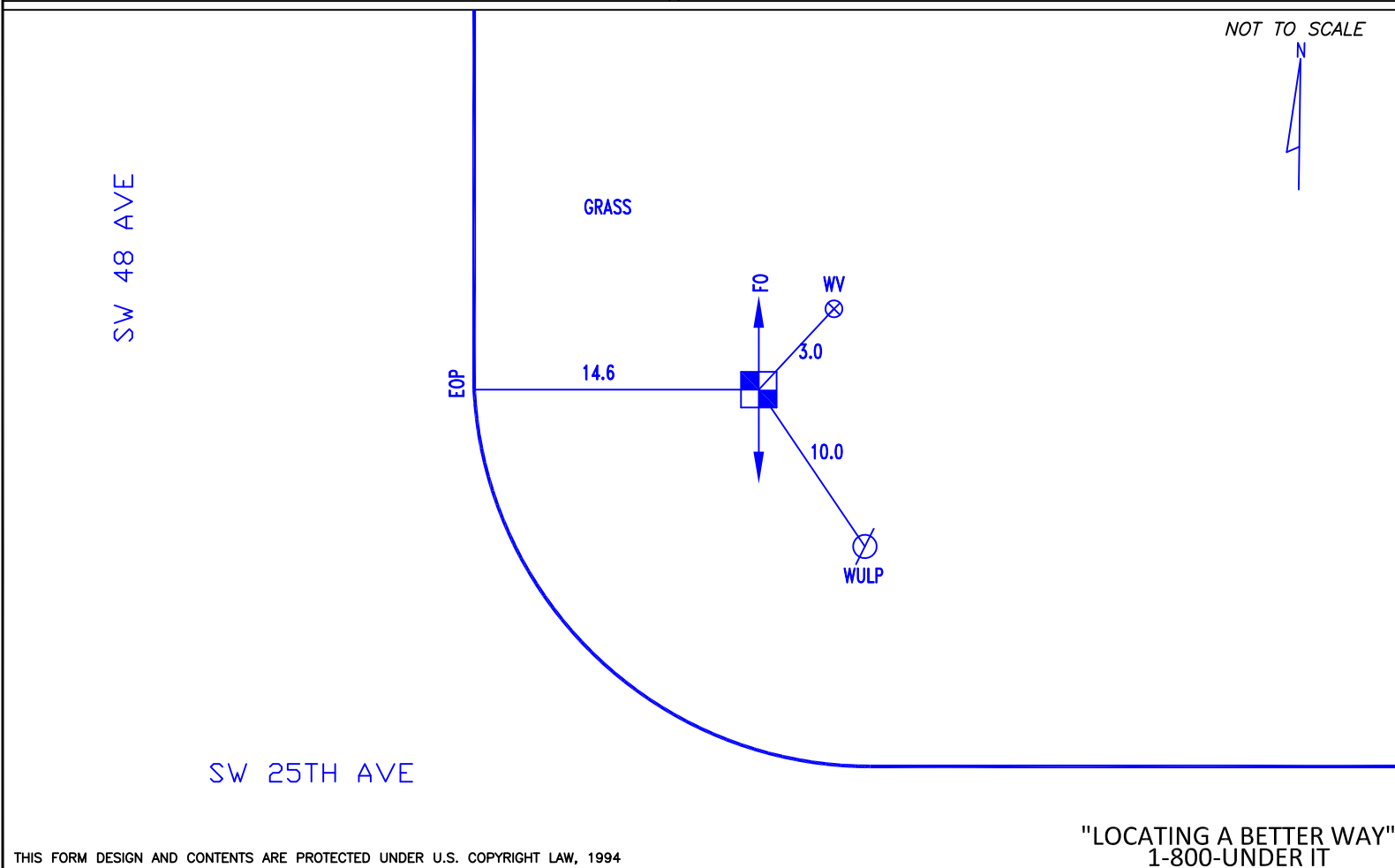
INSTALLED: HUB & TACK AT: CROWN OF UTILITY MARKING TAPE: PINK

SURVEY PIN LOCATED BY: OTHERS

SURVEY INFO.: ALL MEASUREMENTS ON THIS FORM ARE IN ENGLISH / METRIC UNITS (FEET / METERS).

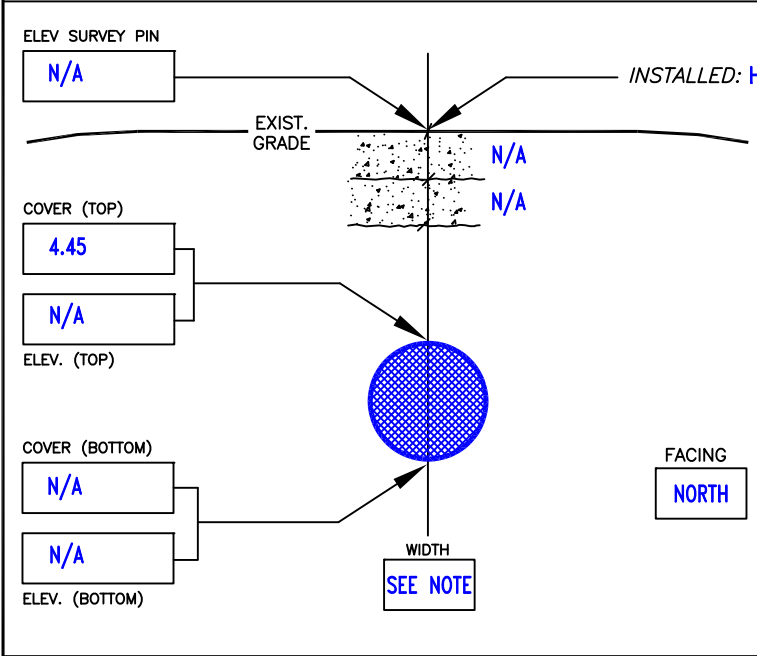
NO SURVEY REQUIRED.

NOTES: UNABLE TO DETERMINE SIZE AND MATERIAL DUE TO ROCKS AND CAVING POSS. SAME UTILITY FROM TH#1 & TH#2.



PROJECT NAME: SW 48TH AVENUE COMPLETE ST - THS
LOCATE REQUESTED BY: CRAVEN THOMPSON & ASSOCIATES
UTILITY REQUESTED: UNKNOWN
UTILITY FOUND: UNKNOWN
MATERIAL AS FOUND: SEE NOTE
SIZE AS FOUND: SEE NOTE

CLIENT JOB# N/A	WORK ORDER # N/A
PROJECT LOCATION: WEST PARK, FL	
SHEET #: C-21 OF N/A	PROPOSED: UTILITY WORK
FORM BY: MP	ASSISTED BY: DC # OF HOLES: 1
PAVING CONDITION: N/A	DATE DUG: 1-10-23
SOIL CONDITIONS: HARD WET MOIST SAND ROCKY	
UTILITY CONDITION: SEE NOTE	

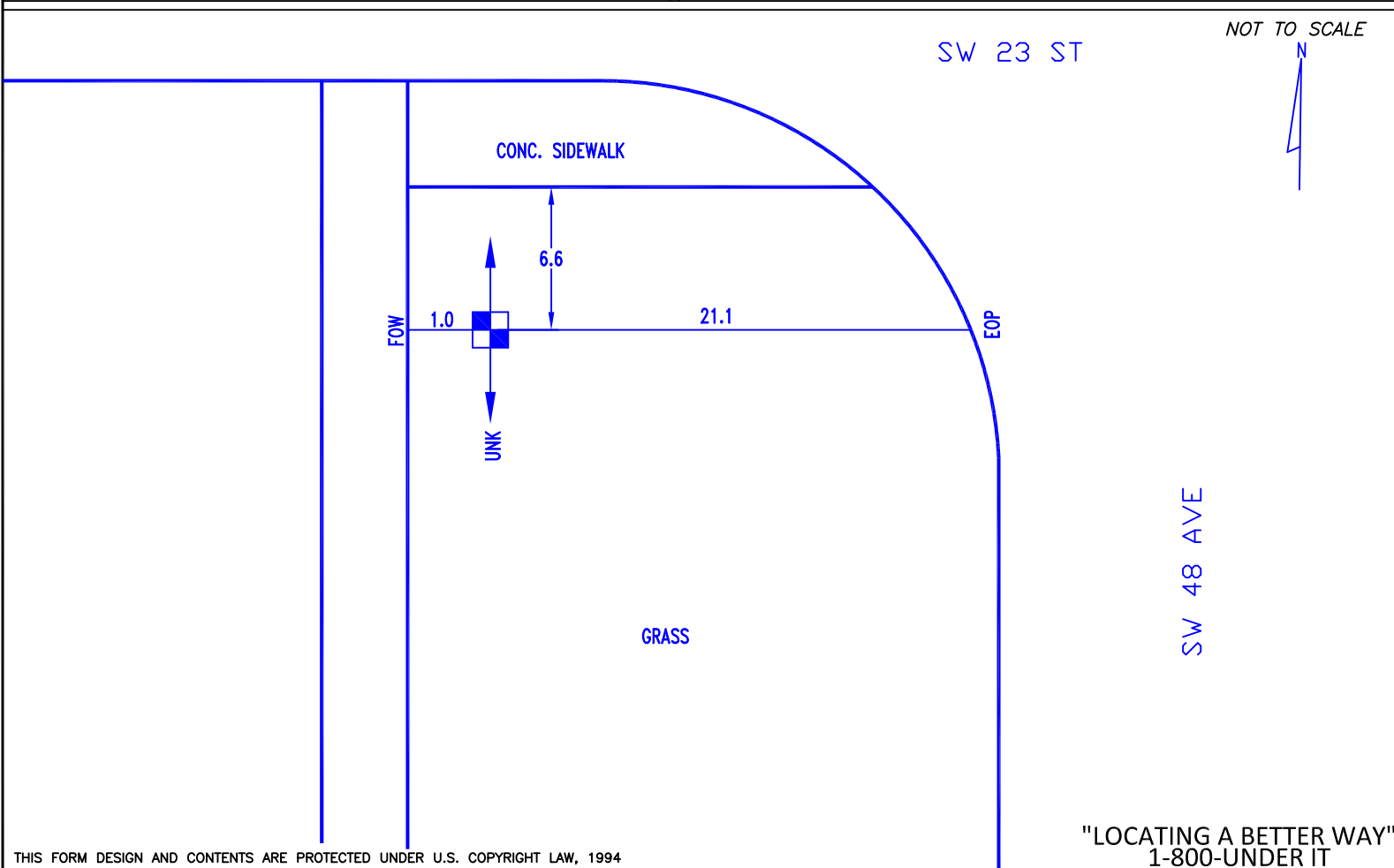


SURVEY PIN LOCATED BY: OTHERS

SURVEY INFO.: ALL MEASUREMENTS ON THIS FORM ARE IN ENGLISH / METRIC UNITS (FEET / METERS).

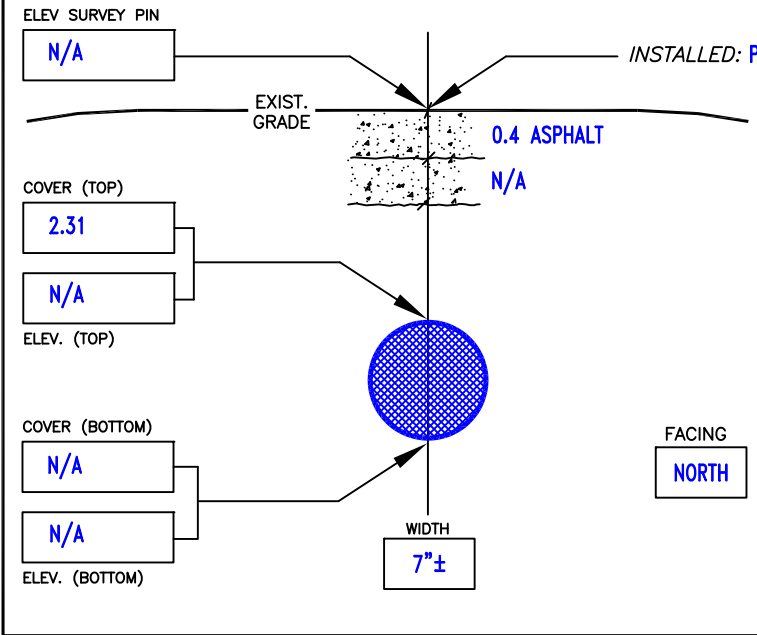
NO SURVEY REQUIRED.

NOTES: TEST HOLE MOVED 22 FEET NORTH OF REQUESTED DUE TO PARKED CARS. UNABLE TO DETERMINE SIZE AND MATERIAL DUE TO ROCKS AND GROUND WATER.



PROJECT NAME:	SW 48TH AVENUE COMPLETE ST - THS
LOCATE REQUESTED BY:	CRAVEN THOMPSON & ASSOCIATES
UTILITY REQUESTED:	8" WATER
UTILITY FOUND:	WATER
MATERIAL AS FOUND:	CAST IRON
SIZE AS FOUND:	6"

CLIENT JOB#	N/A	WORK ORDER #	N/A		
PROJECT LOCATION:	WEST PARK, FL				
SHEET #:	C-21 OF N/A	PROPOSED:	UTILITY WORK		
FORM BY:	MP	ASSISTED BY:	DC	# OF HOLES:	1
PAVING CONDITION:	GOOD	DATE DUG:	1-10-23		
SOIL CONDITIONS:	HARD DRY SAND ROCKY				
UTILITY CONDITION:	GOOD				



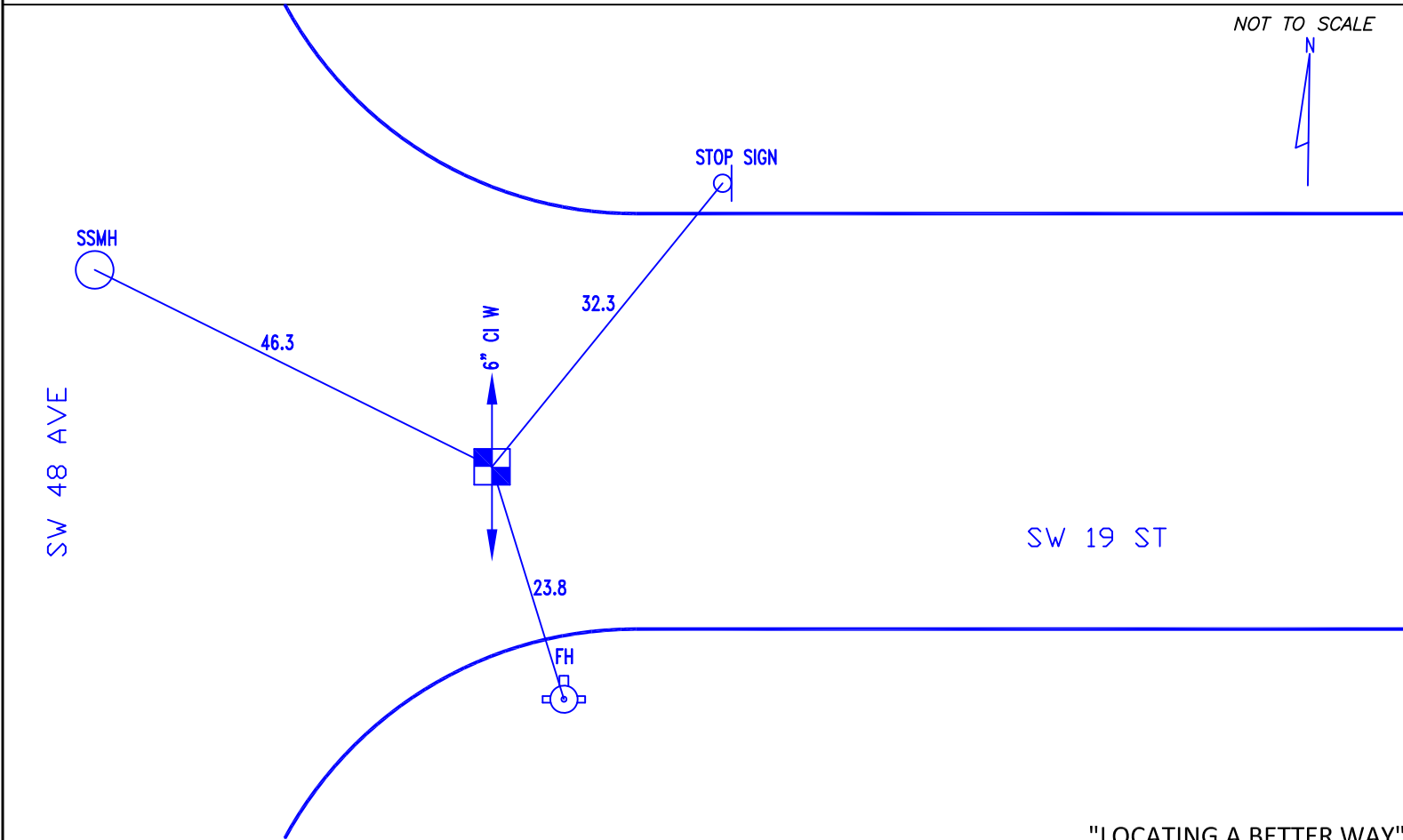
AT: CROWN OF UTILITY MARKING TAPE: BLUE

SURVEY PIN LOCATED BY: OTHERS

SURVEY INFO.: ALL MEASUREMENTS ON THIS FORM ARE IN ENGLISH / METRIC UNITS (FEET / METERS).

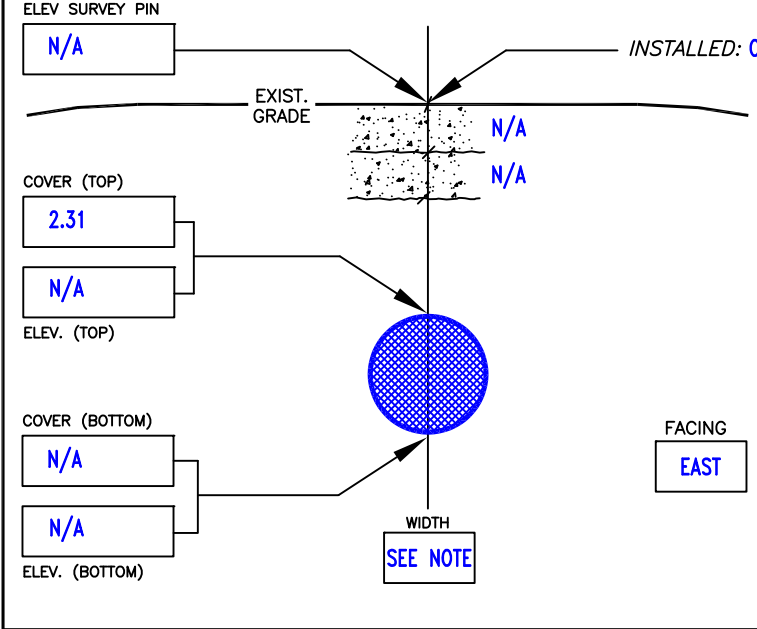
NO SURVEY REQUIRED.

NOTES:



PROJECT NAME:	SW 48TH AVENUE COMPLETE ST - THS
LOCATE REQUESTED BY:	CRAVEN THOMPSON & ASSOCIATES
UTILITY REQUESTED:	WATER
UTILITY FOUND:	WATER
MATERIAL AS FOUND:	SEE NOTE
SIZE AS FOUND:	SEE NOTE

CLIENT JOB#	N/A	WORK ORDER #	N/A		
PROJECT LOCATION:	WEST PARK, FL				
SHEET #:	C-21 OF N/A	PROPOSED:	UTILITY WORK		
FORM BY:	MP	ASSISTED BY:	DC	# OF HOLES:	1
PAVING CONDITION:	N/A	DATE DUG:	1-10-23		
SOIL CONDITIONS:	SOFT WET MOIST SAND				
UTILITY CONDITION:	SEE NOTE				



SURVEY PIN LOCATED BY: OTHERS

SURVEY INFO.: ALL MEASUREMENTS ON THIS FORM ARE IN ENGLISH / METRIC UNITS (FEET / METERS).

NO SURVEY REQUIRED.

NOTES: UNABLE TO DETERMINE SIZE AND MATERIAL DUE TO GROUND WATER.

